



# Introduction

January 1, 2015

# Radio Frequency IDentification



“Technologies that enable the capture of data about objects remotely using radio energy”

# Our Mission



To promote the “public good” by promoting high levels of professionalism through standardized, independent, vendor-neutral certification exams developed by relevant subject matter experts

In March 2015 the Institute’s name was formally changed to

***The RFID Professional Institute***

to better reflect this mission

# Scope



“RFID” covers broad range of technology & management relevant to Radio Frequency Identification systems design, adoption & implementation including but not limited to:

- Real Time Locating Systems (RTLS)
- Active, Battery Assisted and Passive RFID systems
- Software to capture/manage data through RFID systems
- RFID enabled sensors
- RFID integrated with other technologies

# Focus Areas



- Education
  - Curriculum development for RFID education at all levels
  - Foundation of knowledge in RFID technology & application
  - Create awareness of RFID, how it works & benefits it provides
- Individual Certification
  - Provide curriculum for training organizations and candidates
  - Develop certification for various levels and specialisation
  - Hold periodic certification examinations
  - Maintain a register of individual certifications
- Research
  - Coordinate research across industry, governments & academia
  - Administer grants
  - Sponsor specific research in RFID technology and application

# Organisation

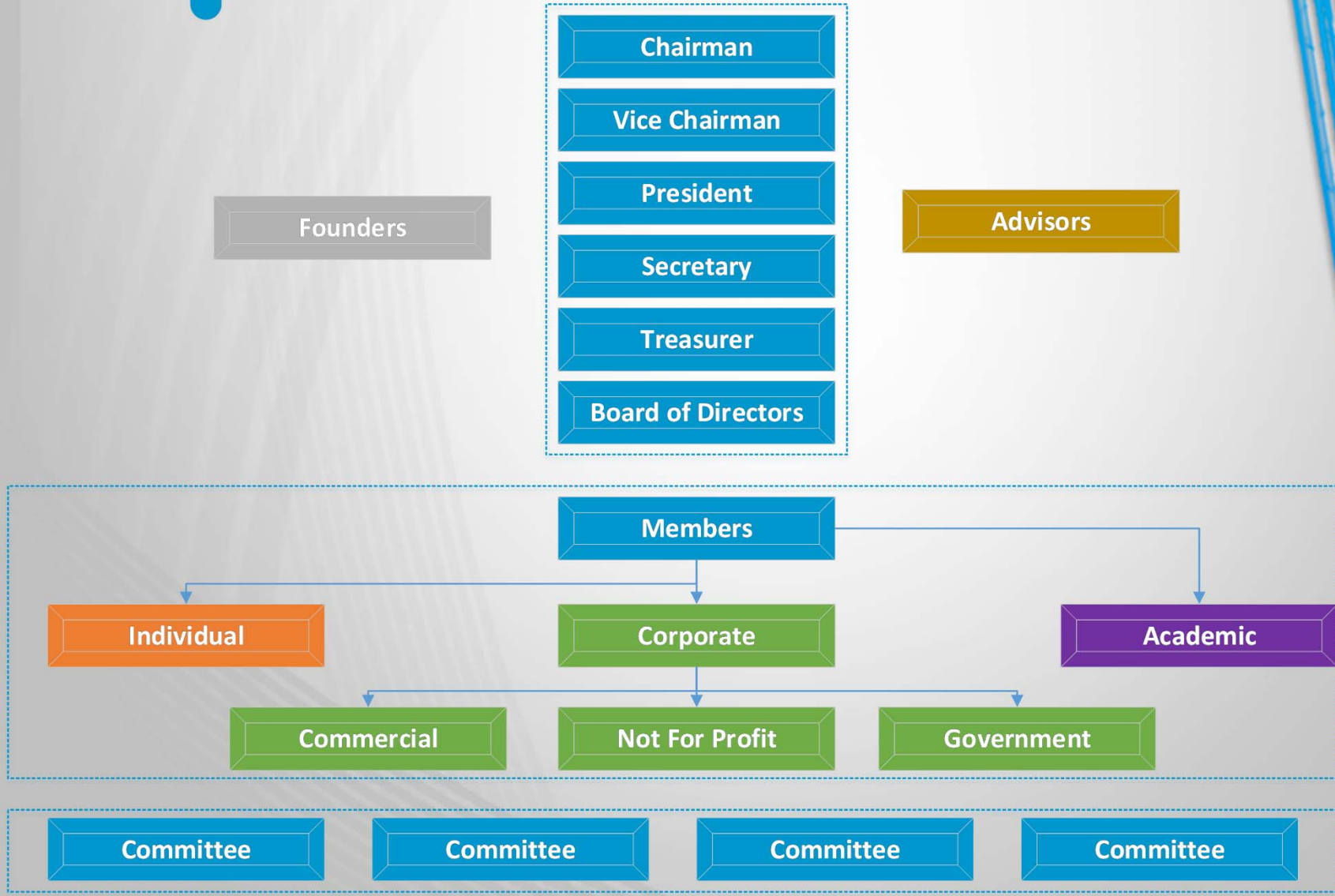


- Formed as a non-profit 501(c)(3) organization in the United States in 2012
- We will seek similar status for any other country that we operate in
- All income must be used for the charitable purposes set out in the Institute's Bylaws
- The Institute aims to be international and currently has members from Asia, Europe, North America, South America.

# Organisation Structure



## International RFID Institute



# Independence



- The Institute is completely independent of any:
  - Particular form of RFID technology
  - Vendor
  - Government
  - Individual
  - Academic organisation
  - Commercial entity
- It is governed by a comprehensive set of Bylaws and overseen by a Board of Directors to guarantee this independence



# How the Institute is Managed



- The Institute is managed by three categories of officials:
  - The Founders – the members that originally decided to found the Institute and who worked for the last three years to establish it
  - The Board of Directors – initially formed from the Founders but subsequently elected on an annual basis
  - The Officers – Chairman, Vice-Chairman, President, Treasurer and Secretary, all of whom must be Board members
- All are volunteers who give their time and expertise without any form of compensation

# Board of Directors

- Mark Roberti, CEO, RFID Journal
- Ian Robertson, CEO, Supply Chain Consulting
- Mike Liard, RFID Consultant
- Diana Hage, CEO, RFID Global Solutions
- Leslie Downey, Principal and Founder, RFID Revolution
- Mark Brown, RFID Solution Architecture Manager, Fujitsu
- Ernesto Castignet, CEO, Ingenieria en Sistemas SRL
- Anthony Palermo, CEO, Academia RFID
- Sanjiv Dua, CEO, RFID4U
- Josef Preishuber-Pflugl, CTO, CISC Semiconductor
- Bill Hardgrave, Dean of Auburn University Business School
- Dr. Pat King, TROI RFID
- Paul Wilson, Bridgestone



# Officers



- Mark Roberti, Chairman
- Ian Robertson, Vice Chairman
- Mike Liard, President
- Diana Hage, Treasurer
- Leslie Downey, Secretary

# Roadmap

- April 2012 - Initial meeting
- August 2012 - Incorporated
- August 2012 - Bylaws approved
- September 2013 - First certification blueprint approved
- November 2013 - Certification Roadmap approved
- April 2014 - beta RFID Associate Certification Exam delivered
- July 2014 partnership with InstructedU for constructing online exam delivery system
- October 2014 - 503(c)(3) non-profit status approved
- November 2014, 2<sup>nd</sup> beta exam delivered in London
- April 2015 1<sup>st</sup> formal exam delivered in San Diego
- July 2015 exam available globally online



# Certification Plan

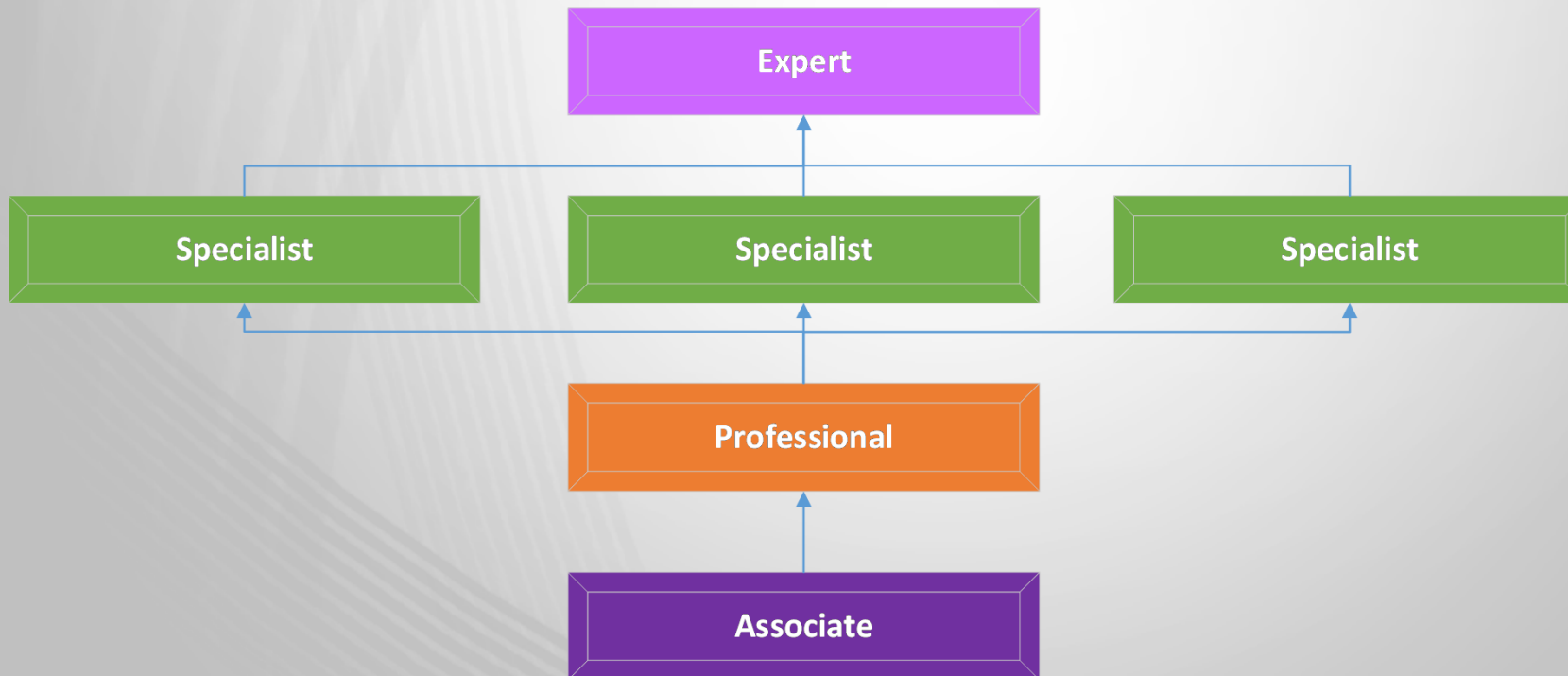


- RFID Professional Institute Associate Exam
- RFID Professional Institute Professional Exam
- RFID Professional Institute Certified Specialist Exam  
(separate exams for passive (LF, HF & UHF), active and software)
- RFID Professional Institute Certified RFID Expert

# Certification Plan



## International RFID Institute Certification Structure



# Certification Exam Questions



- All SME's are assessed & appointed by Board of Directors
- All questions were submitted by a SME
- Questions assigned to specific certification group/topic
- Each was then assessed by an expert in that subject
- And then assessed one final time by a separate expert
- Resulting in a question bank covering foundation topics
- An Officer then selected questions to make the exams
- Those exams were then sat by an expert test panel
- Amendments then made as needed for the final papers
  
- We greatly value feedback on our exams and questions!

# Membership Options



## Corporate Member

- Includes up to three (3) individual professional memberships, plus:
- Eligible to appoint one (1) member to join open committees
- Entitled to appoint up to three (3) members to vote at the annual, general, and special meetings
- Entitled to appoint up to three (3) members to join the Institute as subject matter experts (subject to approval by the Board)
- Entitled to up to three (3) certification testing vouchers



# Membership Options



## Corporate Member (continued)

- Entitled to a 15% discount on all testing vouchers beyond number allotted
- Free access to members-only section of Institute's web site with copies of all member-restricted documents, studies, meeting minutes, conference proceedings, Institute reports, newsletter, and other general membership publications
- Entitled to company listing with logo, link on the Institute website
- Entitled to post company press releases on Institute's News page (subject to policy guidelines of the Board of Directors)

# Membership Options



## Gold Corporate Member

- Includes Corporate Member benefits, plus the following:
- Able to work with RFID Institute to integrate their corporate training into our certification roadmap
- Gold level designation on Institute website
- 20% discount on all Certification testing vouchers

# Membership Options



## Advisory Council Member

- Includes all of the Gold Member benefits, plus:
- Help shape the Institute's certification program
- Appoint co-chairs to designated committees
- Free membership for five individuals
- Nominate a member to the board

# Membership Options



Academic Member

Government Member

Non-Profit Member

- Same benefits as a Corporate Member

# Membership Options



## Individual Members are eligible to:

- Apply for consideration as a Subject Matter Expert
- Have their names and certification credentials published in a searchable list maintained on the Institute's website
- Participate in open committees
- Vote at annual, general, and special meetings of the Institute
- Receive a 15% discount on all certification testing vouchers
- Have access to the members-only section of the Institute's website

# Why Join ?



- Certification will enable both solution providers and end users to hire qualified applicants
- Greater professionalism will increase successful deployments and help expand the market for RFID products
- Individual participation will benefit careers
- Solution provider participation will be seen as a sign of a high degree of professionalism and competitive advantage

# Subject Matter Experts (SME's)



SME's are the heart of any professional institute. It's their knowledge, experience & professionalism we rely upon to ensure our curriculum is accurate, current and relevant.

Not everyone can be a SME but if you fit the profile please consider joining supporting the institute. SME's enjoy reduced membership fee and public recognition.

1. At least 5 years of hands on RFID experience
2. Typically 10+ years of professional experience
3. Recognized leader is at least on major aspect of RFID

You can apply at <http://rfidpros.org/smes/register/>

# Join Today



- To become a member of the RFID Professional Institute: <http://rfidpros.org/memberships/membership-sign-up/>
- To register as a subject matter expert, please visit: <http://rfidpros.org/smes/register/>
- For general questions on the Institute <http://rfidpros.org/about-us/contact/>
- To donate to the Institute <http://rfidpros.org>





Thank You